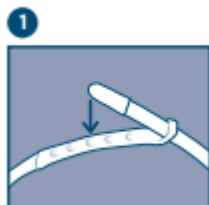




The F&P myMask™ App is designed to support patient mask setup. F&P myMask helps you and your patients effectively fit, fine-tune and clean F&P CPAP\* masks for the treatment of obstructive sleep apnea.

## Fitting Your Mask



1 Connect the Top strap (D) button to the middle position.



2 Hold the front of the mask and pull the back strap (E) over the back of the head. Pull the mask down to position the seal (A) under your nose.

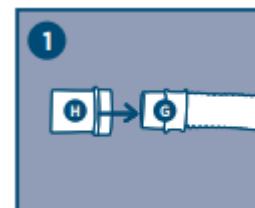


3 Adjust the back straps (E) button to tighten or loosen the seal (A) against your face by pulling evenly on the tabs.



4 Adjust the Top Straps (D) button to tighten or loosen the headgear (C) so that it is sitting just above your ear without touching it. You may need to take the mask off to do this. The top Strap (D) should just sit forward of the middle of the head.

## Assembling your Mask



1 Push the Swivel (H) onto the bottom of the tube (G)



2 Push the seal (A) firmly onto the frame (B) to click into place.



3 Push the Headgear (C) down onto the frame (B) behind the exhaust hole (F) to click into place.