

CARDIFF ADULT
BONE ANCHORED HEARING AID
(BAHA)
IMPLANT PROGRAM

THE BAHA PATIENT JOURNEY



Audiology Department

Clinic 7, Outpatients

University Hospital Wales Cardiff

Heath Park, Cardiff CF14 4XW

Tel: 02921 843179

Email: Heidi.williams@wales.nhs.uk

tracy.hughes6@wales.nhs.uk



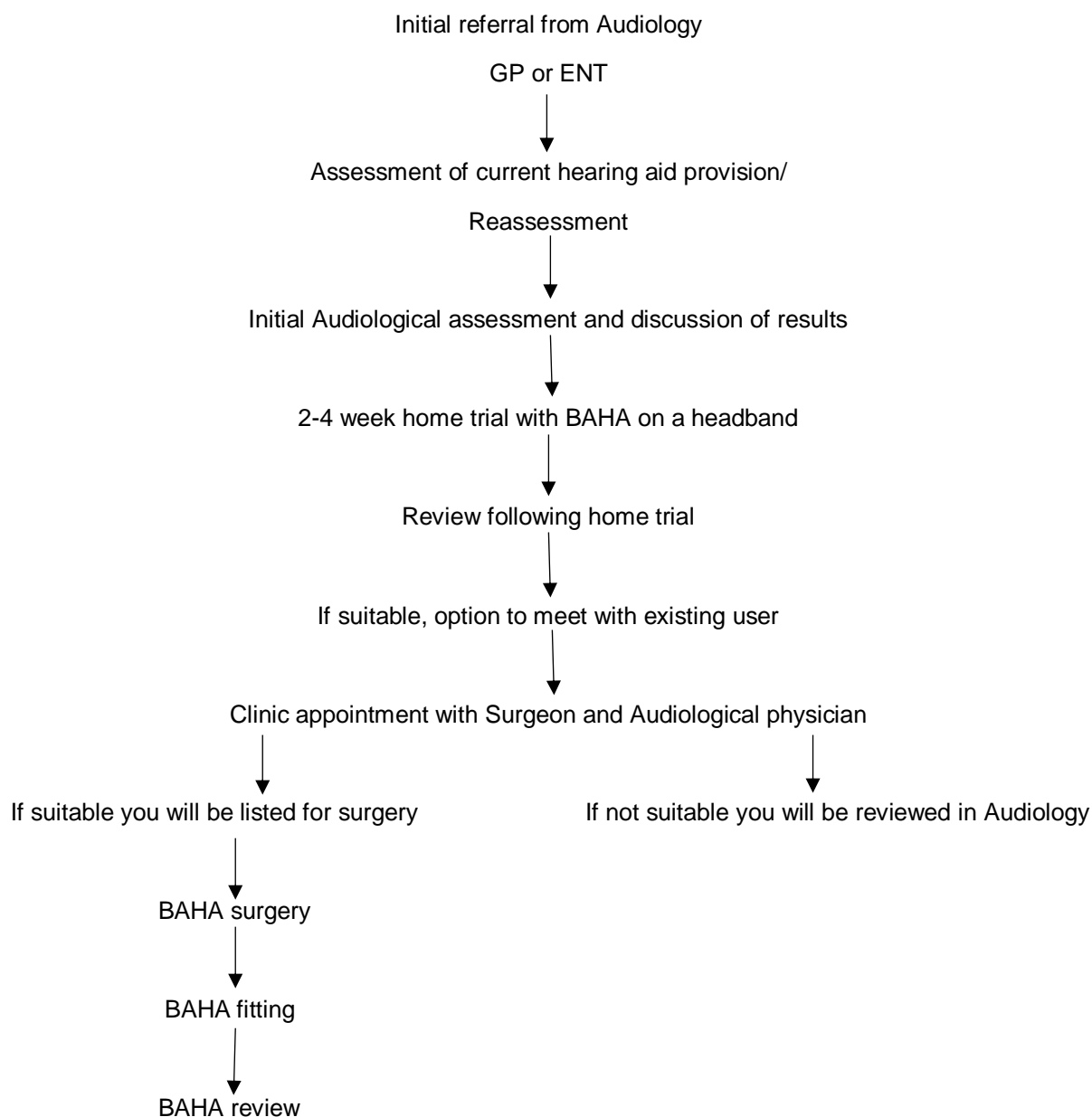
GIG
CYMRU
NHS
WALES

Bwrdd Iechyd Prifysgol
Caerdydd a'r Fro
Cardiff and Vale
University Health Board

REFERRAL

You have been referred for consideration for a Bone Anchored Hearing Aid (BAHA) Implant. The assessment procedure by the BAHA implant team can take between 3 and 9 months. This amount of time is necessary in order to determine if you would in fact benefit from a BAHA Implant. During this time everyone involved in making a decision about BAHA implants, i.e. family & professionals can gather the information needed.

Patient pathway:-



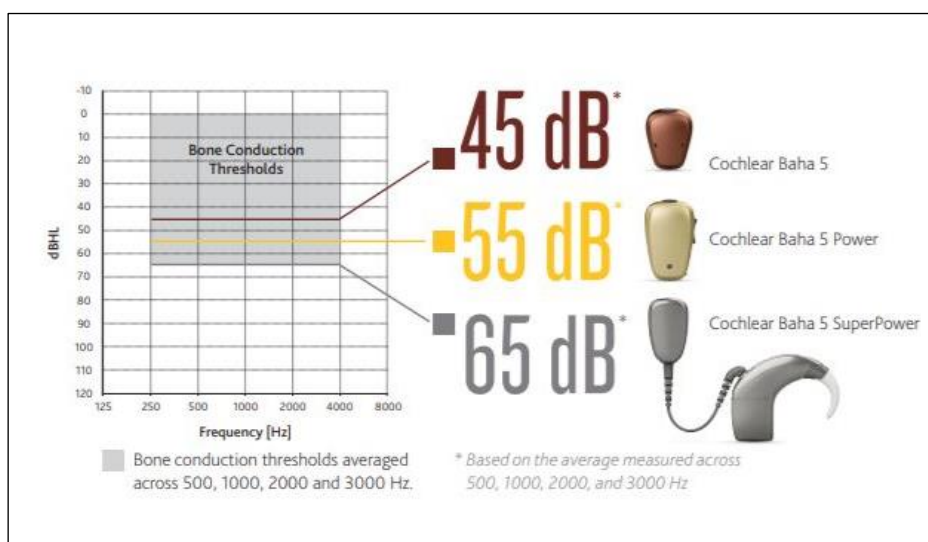
AUDIOLOGICAL ASSESSMENT

Before being referred to the BAHA implant programme you will have been diagnosed with a moderate to severe mixed/conductive hearing loss with little if any benefit from traditional hearing aids. Patients with single sided sensory neural hearing loss will also be considered for BAHA. Your Audiologist will look at your audiological records and you may then be fitted with more suitable hearing aids which you need to wear for a set period of time. Once your Audiologist is happy that you have been optimally aided with conventional hearings they will then proceed with the assessment.

During the assessment your Audiologist will retest your hearing and perform a bone conduction speech test. These test will determine whether you are within the fitting criteria for the BAHA. As BAHA's work via bone conduction it is the bone conduction thresholds that are consider when deciding your suitability for BAHA and also which device would be suitable for your hearing loss.

As part of the assessment a demonstration BAHA device will be programmed and the device will be fitted to a headband for you to trial in clinic. You will then be given the opportunity to take the BAHA home to trial for 2-4 weeks.

Following the home trial your Audiologist will review you in clinic and ask how you got on with the BAHA. If you have had a positive experience and you wish to proceed with the BAHA surgery you will be given an appointment to come back to clinic to meet with the surgeon and Audiological physician.



MEDICAL EVALUATION

Our ENT Consultant Surgeon will consider your medical history and cause of deafness and discuss these issues with you. He/She will also explain what is involved in the operation and the risks involved. Radiological procedures such as Xrays/CT scans may be requested and evaluated by the surgeon. We may also request information from other medical professionals.

There are two types of BAHA systems, the BAHA Connect and the BAHA Attract. Your Audiologist and surgeon will discuss these different options with you and a decision will be made as to which one would be more suitable for you.

The Baha Connect System uses a small abutment that offers a direct connection between the implant and the sound processor, designed to provide optimal hearing. The Baha Connect System is easy to use and requires little daily care; you simply snap the Baha 5 Sound Processor onto the abutment.

The Baha Attract System sets a new standard for hearing performance, comfort and simplicity in bone conduction implant solutions. By using internal and external magnets that attract to one another, it is comfortable and both easy to use and care for.



Once the surgeon is happy to proceed you will be listed for surgery. The wait time for surgery does vary so we are unable to inform you at this stage how long you will have to wait.

BAHA SURGERY

The implantation of the **BAHA** is a simple procedure done in the operating theatre which takes approximately 1 hour. You will have the choice of general or local anaesthesia.

After BAHA implant surgery, your head will likely be wrapped in a bandage to protect the incision site, and you will be given instructions on how to care for it along with medication prescriptions and possible activity restrictions. Once you take the bandage off, you may have some swelling around the incision site.

BAHA FITTING

Once you have had your surgery you will be seen in ENT a few days later to have the implant site checked. If the surgeon is happy he/she will contact your Audiologist so that a date can be arranged for you to have your BAHA fitted. Your surgeon will require a recovery period before your BAHA is programmed for the first time, this is usually 4 to 12 weeks for Baha Implants.

BAHA REVIEW

You will be given an appointment to attend the Audiology clinic for a review 3 months after you have had the BAHA fitted. At this appointment your Audiologist will ask you to complete some questionnaires and will carry out some hearing tests. If necessary the Audiologist can adjust your BAHA to improve the sound quality for you. If you are happy and your Audiologist is happy with your progress they will review you 1 year post fitting and then you will be followed up every 3 years.

If you should develop a problem with the BAHA or the implant site at any time you can access the service by telephone or email, the details can be found on the front of this information leaflet.

USEFUL LINKS

<https://www.cochlear.com/us/en/home/products-and-accessories/baha-system>