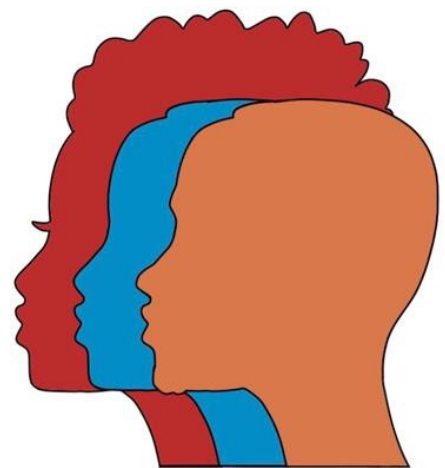
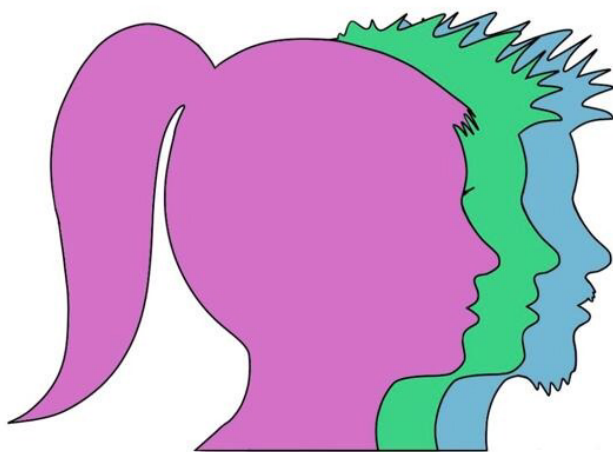


PARKSIDE

PRIVATE HOSPITAL

ORCHIDECTOMY



Laura Mita

The GRS team Consists of:

Mr James Bellringer
Miss Tina Rashid
Laura Mita

Consultant Urological Surgeon
Consultant Urological Surgeon
Lead Nurse

Below is a brief outline of the process for your journey with our team.

Now that we have received your referral letter (this occurs once you have been given the all clear to proceed to seeing a Consultant Surgeon by your GIC), we can arrange for an initial consultation with one of our Consultants, it will take place at **Parkside at Putney, Fourth Floor, 266-276 Upper Richmond Road, Putney London SW15 6TQ**

What happens now?

We suggest that you read this information and write down any questions you have for the Consultant when you see them again or contact the Lead Nurses by email.

Initial Appointment:

The initial consultation will take approximately 15-20 minutes and will involve a discussion with the Consultant and Lead Nurse, an examination of the genital area and then, all being well; you will be given a date to come in for your pre- assessment appointment.

It is a good idea once you've read this booklet that to write any questions down to discuss with the Consultant or with the Lead Nurse at your pre-assessment appointment.

Your surgery will take place at Parkside Hospital in Wimbledon.

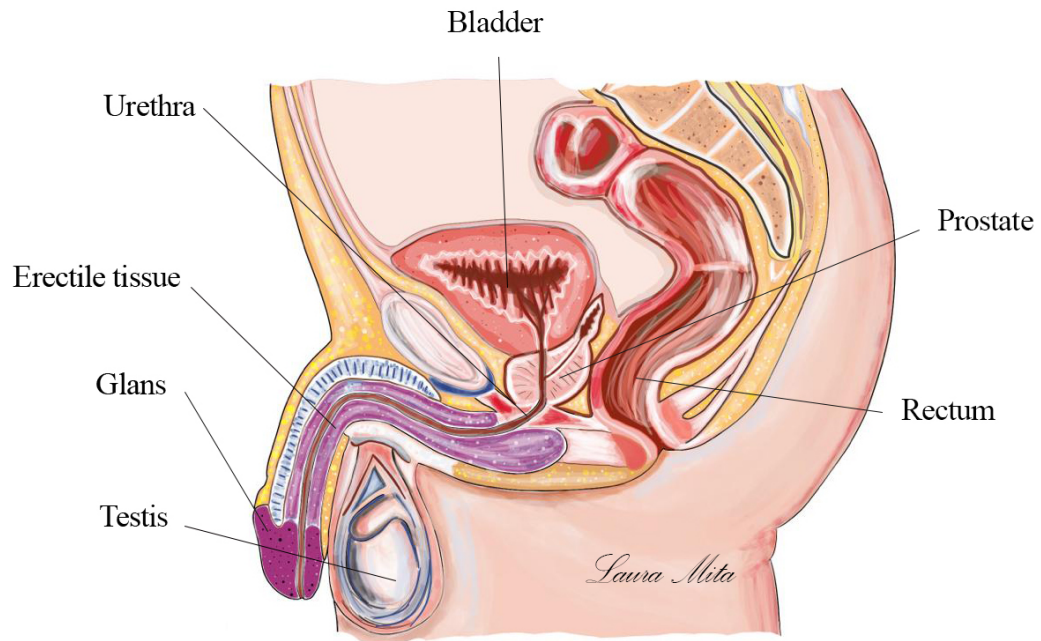
If you fail to attend your appointment and do not contact a member of the team to let us know you won't be attending, you will be offered one further appointment. If you do not attend this appointment, you will then be discharged back to the GIC or in the case of a follow up appointment you will be discharged back to your GP.

What is an Orchidectomy?

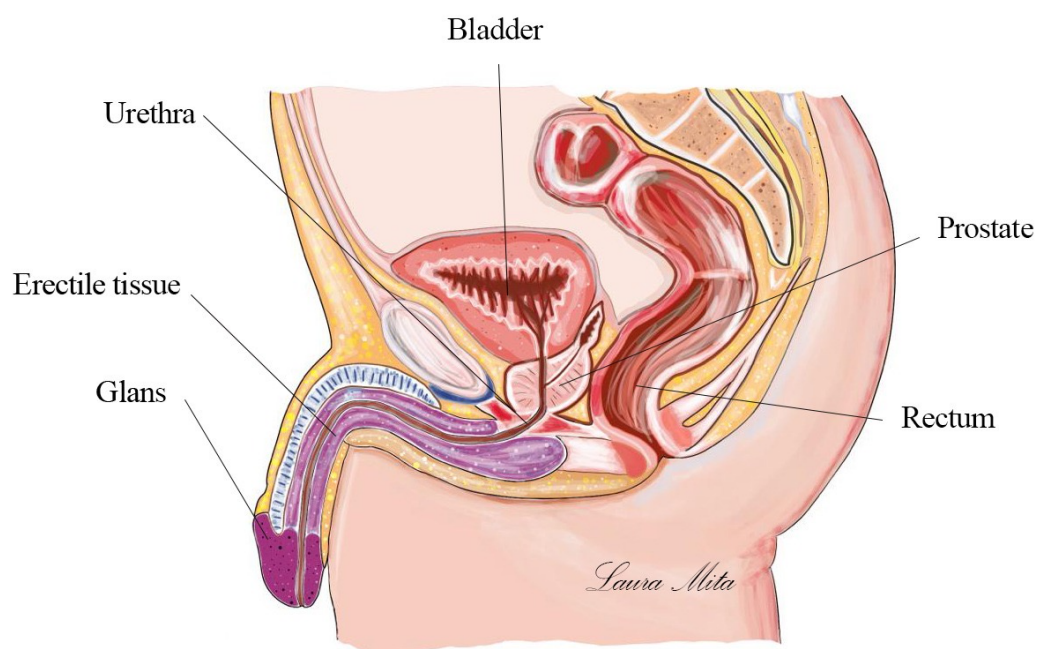
An Orchidectomy is the removal of both testes. A small incision (cut) is made in the scrotum. The testes are found, the blood vessels carefully cut and tied, and the testes are removed. The skin and underlying muscle are then closed with stitches.

The operation is commonly performed under general anaesthesia but can be performed under local anaesthetic in some patient following discussion with your surgeon.

THE MALE PELVIC ORGANS



ORCHIDECTOMY



Pre-Assessment Clinic Appointment

We like to see and assess all our patients in the Pre-Assessment clinic prior to their surgery.

This will be divided into two parts:

First of all you will be seen by a Pre-Assessment Nurse. This involves taking a full medical history, and some clinical investigations including the following:-

- An ECG (Electrocardiogram) if required
- Pre-operative blood tests
- A urine sample
- MRSA swabs (nose and groin)

You will then be seen by the Lead Nurse to discuss your hospital stay, go through the consent form and to answer any questions you may have.

Remember to bring any relevant medical reports that you may have at home and a list of any medication that you are taking with you when you come for your appointment. If you have any heart problems, you must provide your past cardiac investigation.

✓ **Please could you complete the Pre-Assessment Health Questionnaire.**

Allow at least 1½ hours for this appointment.

What are the risks and side effects of this operation?

Occasional:

Infection of incision requiring further treatment

Bleeding requiring further surgery

How will I feel after operation?

After the operation you may feel drowsy and it is essential that someone is able to collect you.

You can usually go home on the day of the operation or the day after depending on how you feel.

Before you leave, we will ensure that you are:

Moving around freely

Able to eat and drink

Mostly pain free

Will the operation be painful?

Any discomfort you experience should be relieved by taking analgesics (pain relief medication). You will be given these after your operation and a small supply to take home. In the unlikely event these do not control your pain or you require more please contact your GP.



Will I need to do anything to the wound?

The stitches are dissolvable, so do not need removing. The wound dressing may be removed 2 days after the operation when you have a bath or a shower. Soap and water is entirely adequate and you may wash as often as you like. When you remove the dressing there may be a small amount of blood on it, this is quite normal and nothing to worry about. The wound may be swollen and bruised, but this should subside gradually. Some patients find tight underwear helpful to relieve pain. Sometimes the wound can show signs of an infection, these are:

Redness

Tenderness

Persisting throbbing

Feeling shivery as if you have flu

Fever

Wound is leaking fluid or pus

Swelling around the wound

If this happens please make an appointment to see your GP, or if he/she is not available, go to your nearest A&E.

When can I go back to work?

You can return to work usually 1-2 weeks after the operation, but if you perform strenuous work which requires heavy lifting, you should not return for 4 weeks.

When can I drive?

You should not drive for at least a week; you should however refrain from driving until you can perform an emergency stop without strain or pain.

When can I start playing sport?

In most cases sporting activities can resume after four-six weeks.

If you require further advice, support or information, please do not hesitate to contact the Lead Nurse:

0747 922 8266

or call the hospital switchboard and ask for the ward you were nursed on as the nurses may also be able to help: **020 8971 8000**

For admin queries, please email:

grs@parkside-hospital.co.uk

Or phone the Service Co-ordinator:

020 8971 8000 ext. 8400

For surgical queries please email:

gendernurse@parkside-hospital.co.uk

Please feel free to contact the Lead Nurse no matter how trivial you may think your concerns or worries are – she is there to help you.