

Reference Number: UHB 314 Version Number: 1	Date of Next Review: 7 Apr 2019 Previous Trust/LHB Reference Number: N/A
--	--

Protocol for the Interface between the Medical Emergency Assessment Unit (MEAU) and Hafan y Coed

Introduction and Aim

The aim of this protocol is to ensure that all staff adhere to the correct referral process in the event that a mental health inpatient should require transfer for medical assessment to MEAU at UHL.

- Objectives**
- To ensure that all staff are aware of the inclusion criteria for MEAU and the referral process that must be adhered to.
 - To ensure that staff are aware of the pathway to UHW for medical assessment if a patient does not meet the criteria for transfer to MEAU at UHL.

Scope

This procedure applies to all of our staff working within Hafan y Coed on the UHL site, including those with honorary contracts.

Equality Impact Assessment	An Equality Impact Assessment has not been completed.
Health Impact Assessment	A Health Impact Assessment (HIA) has not been completed.
Documents to read alongside this Procedure	
Approved by	Mental Health Policy Group Mental Health Clinical Board Quality & Safety Committee

Accountable Executive or Clinical Board Director	Mental Health Clinical Board
Author(s)	Kelly Panniers Advanced Nurse Practitioner

Disclaimer
If the review date of this document has passed please ensure that the version you are using is the most up to date either by contacting the document author or the [Governance Directorate](#).

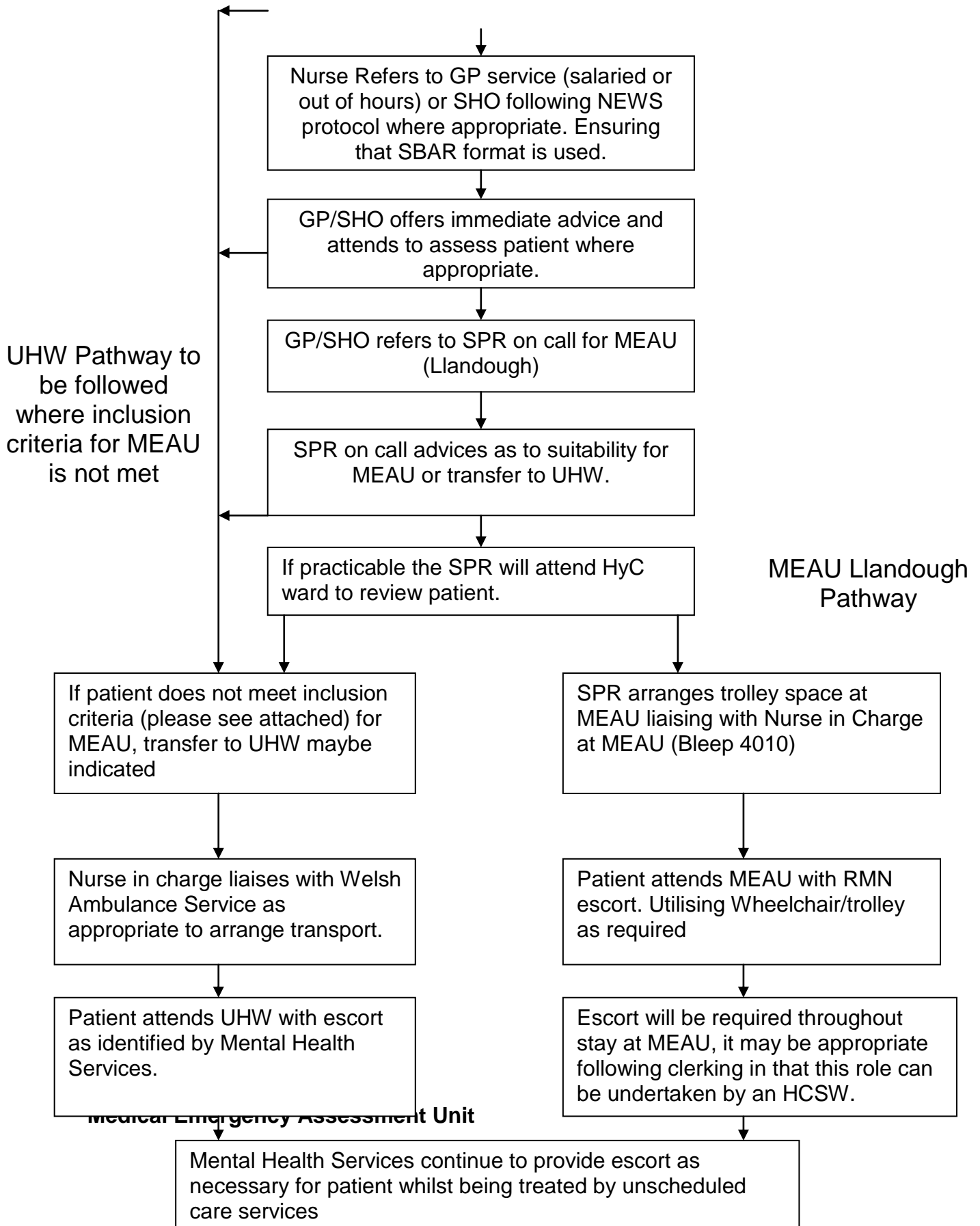
Document Title: Protocol for the interface between MEAU and Hafan y Coed	2 of 4	Approval Date: 7 Apr /2016
Reference Number: UHB 314		Next Review Date: 7 Apr 2019
Version Number: 1		Date of Publication: 21 Jun 2016
Approved By: Mental Health Clinical Board Quality & Safety Committee		

Summary of reviews/amendments			
Version Number	Date of Review Approved	Date Published	Summary of Amendments
1	07/04/2016	21/06/2016	New Document

Protocol for the Interface between MEAU and AMHU

Nurse at HyC concerned for unwell patient. This may be indicated by NEWS
--

Document Title: Protocol for the interface between MEAU and Hafan y Coed	3 of 4	Approval Date: 7 Apr /2016
Reference Number: UHB 314		Next Review Date: 7 Apr 2019
Version Number: 1		Date of Publication: 21 Jun 2016
Approved By: Mental Health Clinical Board Quality & Safety Committee		



Document Title: Protocol for the interface between MEAU and Hafan y Coed	4 of 4	Approval Date: 7 Apr /2016
Reference Number: UHB 314		Next Review Date: 7 Apr 2019
Version Number: 1		Date of Publication: 21 Jun 2016
Approved By: Mental Health Clinical Board Quality & Safety Committee		

Inclusion Criteria

- Chest Pain
- Difficulty in breathing
- Unconscious/collapsed with no trauma
- Seizures
- Dehydration
- Hypo/Hyperglycaemia
- Anaphylaxis
- Swollen Legs (unless dialysis dependent or ?DVT in DVT Clinic Hours)
- Haematemesis
- Haemoptysis
- Suspected Sepsis (as per NEWS Protocol)

Please ensure that you provide as much information as possible in the referral to MEAU. This will need to include the reason for admission and relevant medical history if known.

UHW Pathway

For any other emergency or If a patient is suspected of meeting any of the following criteria, it would be necessary to transfer them to the Emergency Department at UHW.

- Paediatrics 16 years old and under
- Trauma including head injury (this would include suturing)
- Surgical patients/abdominal pain that could be surgical in nature/ any recent surgery with ongoing complications.
- Acute PR bleeding
- Intoxicated patients
- Patients on haemodialysis
- ST Elevation MI/new bundle branch block
- CVA
- Pregnancy over 20 weeks
- Orthopaedic problems
- Painless Jaundice
- ?DVT's between 09.00-16.00 Monday –Friday unless contraindicated to DVT Clinic in UHW
- Cardiac and respiratory arrest including life threatening cardiac arrhythmias