



Cardiff and the Vale University Health Board (Cardiff and Vale UHB) Eye Health Needs (EHNA) Assessment March 2025 v3

Our Population

Cardiff and Vale UHB cover the two unitary authorities of Cardiff and the Vale of Glamorgan. Combined, Cardiff and Vale have a population of 518,269 (population estimates by Local Authority and age), of which 383,536 live in Cardiff and 134,733 in the Vale of Glamorgan. This number has increased since the most recent totals in the Regional Partnership Board's Population Needs Assessment (2022-27) and populations are expected to continue to increase in the next decade. The current Local Authority local development plans for Cardiff and the Vale of Glamorgan which will shape how the population grows up until 2036, provides opportunities to deliver in the region of 24,000 additional homes in Cardiff and 9,460 homes in the Vale or Glamorgan for an estimate of c.77,000 residents.

Cardiff has a relatively young population, mainly due to the student population in the city. The proportion of older people is slightly higher than the Wales average in the Vale; the number of older people and the proportion of people who are older is increasing across both areas.

Every year, people migrate into and out of both Cardiff and the Vale. In 2021-22 the net effect of this was around 500 people moving into each local authority areas from elsewhere in the UK; there was also a significant increase in the number of international migrants moving into the area, with a net effect of over 10,000 people moving into Cardiff and over 500 into the Vale from overseas. Combined, this made up over half the number of international migrations into Wales as a whole.

Table 1: Age breakdown of the population of Cardiff and Vale.

Area	0–15year-old	%	16-64-yearold	%	65+ year old	%	All ages
Cardiff	67,230	18%	261,449	68%	54,857	14%	383,536
Vale	24,819	18%	79,811	60%	30,103	22%	134,733
Cardiff and Vale	92,049	18%	341,260	66%	84,960	16%	518,269

Source: Stats Wales

Available at: Population estimates by local authority and age

Published on: July 2024 (most recent release)

Table 2: Sex of population of Cardiff and Vale.

Area	Males	%	Females	%	All persons
Cardiff	188,596	49%	194,940	51%	383,536

Vale	65,072	48%	69,661	52%	134,733
Cardiff and Vale	253,668	49%	264,601	51%	518,269

Source: Stats Wales

Available at: Population estimates by local authority and age

Published on: July 2024

Table 3: Patients registered with a GP Practice per cluster in Cardiff and Vale (includes cross border patients who are resident in other Health Board areas).

Cluster	Number	%
Cardiff East	59,033	10.9%
Cardiff South East	66,179	12.3%
City and South Cardiff	42,537	7.9%
Cardiff North	106,181	19.7%
Cardiff South West	74,968	13.9%
Cardiff West	53,833	10.0%
Central Vale	67,081	12.4%
Eastern Vale	36,825	6.8%
Western Vale	31,906	5.9%
CAV Unidentified Cluster	620	0.1%
CAV TOTAL	539,163	100.0%

Source: Stats Wales patients registered at a GP Practice 2024

*Available at: Patients Registered at a GP Practice Published on: July 2024 *Note: Discrepancy in population data due to different data sources used.*

Welsh Index Multiple Deprivation (WIMD)

Deprivation is the lack of access to opportunities and resources, which might be expected in society. This can be in terms of material goods or the ability of an individual to participate in the normal social life of the community. The Welsh Index of Multiple Deprivation is the official measure of relative deprivation for small areas in Wales. It identifies areas with the highest concentrations of several different types of deprivation.

Cardiff and the Vale of Glamorgan have areas of established inequalities; in Cardiff 39 Lower Super Output Areas (LSOAs) are included in the top 10% most deprived in Wales, whilst 3 LSOAs in the Vale of Glamorgan are ranked in the top 10% most deprived area in Wales. In Cardiff, around one-fifth of residents live in the most deprived 10% LSOAs and approximately 50% of Cardiff's population live in the 50% least deprived LSOAs while for the Vale of Glamorgan, 65% live in the 50% least deprived areas.

Table 4: Number (%) of patients living in the most deprived 20% of WIMD, 2019, by cluster.

Cluster	Number of patients living in most deprived 20% of WIMD	% of patients living in most deprived 20% of WIMD
Cardiff East	26915	45.65
Cardiff South East	26421	38.94
City and South Cardiff	21220	50.11
Cardiff North	3432	3.22
Cardiff South West	34107	45.54
Cardiff West	7177	13.38
Central Vale	16736	25
Eastern Vale	56	0.15
Western Vale	1	0
CAV TOTAL	136065	24.66

Source: Stats Wales deprivation at GP cluster level 2022

Available at: Deprivation at GP cluster level Date of publication: April 2024 Ethnicity:

People from different ethnic communities are at greater risk of some of the leading causes of sight loss. The proportion of people from minority ethnic groups is higher than the average for Wales, 12.10% of the population are from minority ethnic groups, compared to 4.30% across Wales.

Table 5: Total population by ethnicity.

Ethnicity	Population	Percentage
White	414,952	88%
Mixed ethnicity	11,726	3%
Asian / Asian British	25,230	5%
Black / Black British	8,690	2%
Other ethnic groups	11,828	3%

Note: Percentages may not sum to 100 due to rounding.

Source: RNIB Sight Loss Data Tool Version 5.2

Date created: March 2023

Prevalence of Health Conditions

Prevalence is a measure of the frequency of a disease or health condition in a population at a particular point in time (and is different to incidence, which is a measure of the number of newly diagnosed cases within a particular time period). An integral part of the General Medical Services (GP) contract is the collection of prevalence data to allow practices to case find those patients that require specific management and for Health

Boards to inform wider planning of health services. Prevalence data are collected in the form of practice "registers" and counts patients with one specific disease or condition. There may also be other criteria for inclusion on a register, such as age or date of diagnosis. Patients may be on more than one register.

The table below describes Cardiff and Vale and cluster level figures for each of the 17 registers, and where this compares with the national average. Targeted monitoring of activity provided by optometry services will include a focus on those areas in Cardiff and the Vale showing as an outlier, and have an impact on eye health, to ensure appropriate implementation of WGOS that meets population needs.

Table 6: Prevalence Data - Chronic Disease Prevalence in Cardiff and Vale Population.

Chronic Disease Prevalence in CAV Population	CAV UHB (%)	Wales (%)
Asthma	6.51%	7.16%
Atrial fibrillation	1.93%	2.56%
Cancer	2.91%	3.55%
Chronic obstructive pulmonary disease	1.70%	2.28%
Secondary prevention of coronary heart disease	2.58%	3.43%
Dementia	0.65%	0.74%
Diabetes mellitus (patients aged 17+)	6.85%	8.17%
Epilepsy (patients aged 18+)	0.81%	0.95%
Heart failure	1.10%	1.28%
Hypertension	12.81%	15.95%
Learning disability	0.44%	0.50%
Mental health	0.96%	1.05%
Obesity (patients aged 16+)	9.04%	11.24%
Osteoporosis (patients aged 50+)	0.23%	0.23%
Palliative care	0.28%	0.30%
Rheumatoid Arthritis (patients aged 16+)	0.57%	0.76%
Stroke and transient ischemic attack	1.73%	2.18%

Source – Digital Health and Care Wales, Primary Care Information Portal 2023/2024

Table 7: Chronic Disease Prevalence in Cardiff and Vale Cluster Population.

Chronic Disease Prevalence in Cluster Population	Below Wales %				Above Wales %			Western Vale (%)	Central Vale (%)	Eastern Vale (%)	Wales %
	Cardiff West (%)	Cardiff City & South (%)	Cardiff North (%)	Cardiff South West (%)	Cardiff East (%)	Cardiff South East (%)	Cardiff East (%)				
Asthma	7.25%	5.17%	6.82%	7.07%	6.88%	4.83%	6.61%	6.88%	6.71%	7.16%	
Atrial fibrillation	2.50%	0.88%	2.12%	1.64%	1.72%	0.96%	2.92%	2.32%	2.86%	2.56%	
Cancer	4.05%	1.06%	3.51%	2.36%	2.85%	1.49%	4.71%	3.22%	3.29%	3.55%	
Chronic obstructive pulmonary disease	1.76%	1.09%	1.10%	2.09%	2.46%	1.42%	1.29%	2.49%	1.48%	2.28%	
Secondary prevention of coronary heart disease	3.12%	1.75%	2.58%	2.41%	2.80%	1.60%	3.00%	3.19%	3.15%	3.43%	
Dementia	0.65%	0.53%	0.73%	0.60%	0.76%	0.31%	0.70%	0.65%	1.07%	0.74%	
Diabetes mellitus (patients aged 17+)	6.67%	7.55%	5.90%	7.75%	8.12%	5.20%	6.92%	8.00%	6.46%	8.17%	
Epilepsy (patients aged 18+)	0.91%	0.64%	0.69%	0.87%	0.98%	0.61%	0.71%	1.10%	0.98%	0.95%	
Heart failure	1.23%	0.62%	1.22%	1.01%	1.18%	0.58%	1.41%	1.39%	1.36%	1.28%	
Hypertension	14.10%	9.07%	12.76%	12.91%	14.07%	7.62%	16.41%	15.52%	14.75%	15.95%	
Learning disability	0.45%	0.28%	0.32%	0.53%	0.60%	0.33%	0.53%	0.66%	0.26%	0.50%	
Mental health	1.16%	1.17%	0.84%	0.97%	0.82%	1.03%	0.67%	1.12%	0.77%	1.05%	
Obesity (patients aged 16+)	10.64%	8.27%	9.00%	12.09%	14.35%	10.43%	9.86%	14.04%	8.50%	11.24%	
Osteoporosis (patients aged 50+)	0.65%	0.23%	1.34%	0.46%	0.91%	0.36%	0.29%	0.42%	0.76%	0.23%	
Palliative care	0.24%	0.23%	0.32%	0.38%	0.35%	0.17%	0.22%	0.21%	0.34%	0.30%	

Chronic Disease Prevalence in Cluster Population	Cardiff West (%)	Cardiff City & South (%)	Cardiff North (%)	Cardiff South West (%)	Cardiff East (%)	Cardiff South East (%)	Western Vale (%)	Central Vale (%)	Eastern Vale (%)	Wales %
Rheumatoid Arthritis (Patients aged 16+)	0.77%	0.77%	0.67%	0.58%	0.86%	0.43%	0.73%	0.81%	0.66%	0.76%
Stroke and transient ischaemic attack	2.18%	1.07%	1.78%	1.60%	1.65%	1.04%	2.70%	1.99%	2.09%	2.18%

Source – Digital Health and Care Wales, Primary Care Information Portal 2023/2024

Stroke

Around 60% of people who experience strokes will also experience some form of visual impairment immediately after their stroke. There are national guidelines recommending specialist vision assessment for stroke survivors who have a suspected visual problem.

It is estimated that 2,100 people have a long-standing health condition after experiencing a stroke.

This equates to approximately 9,300 patients in Cardiff and Vale who may experience some form of visual impairment as a result of their stroke.

Dementia

Prevalence estimates suggest that over 1 million people in the UK have some form of dementia. Prevalence of sight loss is higher among people with dementia, especially those living in care homes. In Cardiff and the Vale, it is estimated that 6,880 people are living with dementia. Within this group it is estimated that 2,460 people have dementia and vision impairment.

Learning disabilities

People with learning disabilities are 10 times more likely to experience sight loss than the general population. In the CAV UHB it is estimated that 580 adults have a learning disability and partial sight. A further 170 adults have a learning disability and blindness.

Hearing impairment

In the CAV UHB it is estimated that 45,800 people have a moderate or severe hearing impairment, and 1,000 people have a profound hearing impairment.

Dual sensory loss

An estimated 2,760 people are living with some degree of dual sensory loss in the CAV UHB. Of these people, it is estimated that 1,080 are living with severe dual sensory loss.

Falls

Falls are more common, and are more likely to have serious outcomes, amongst older people. In some cases, falls can lead to serious medical problems and a range of adverse outcomes for health and wellbeing.

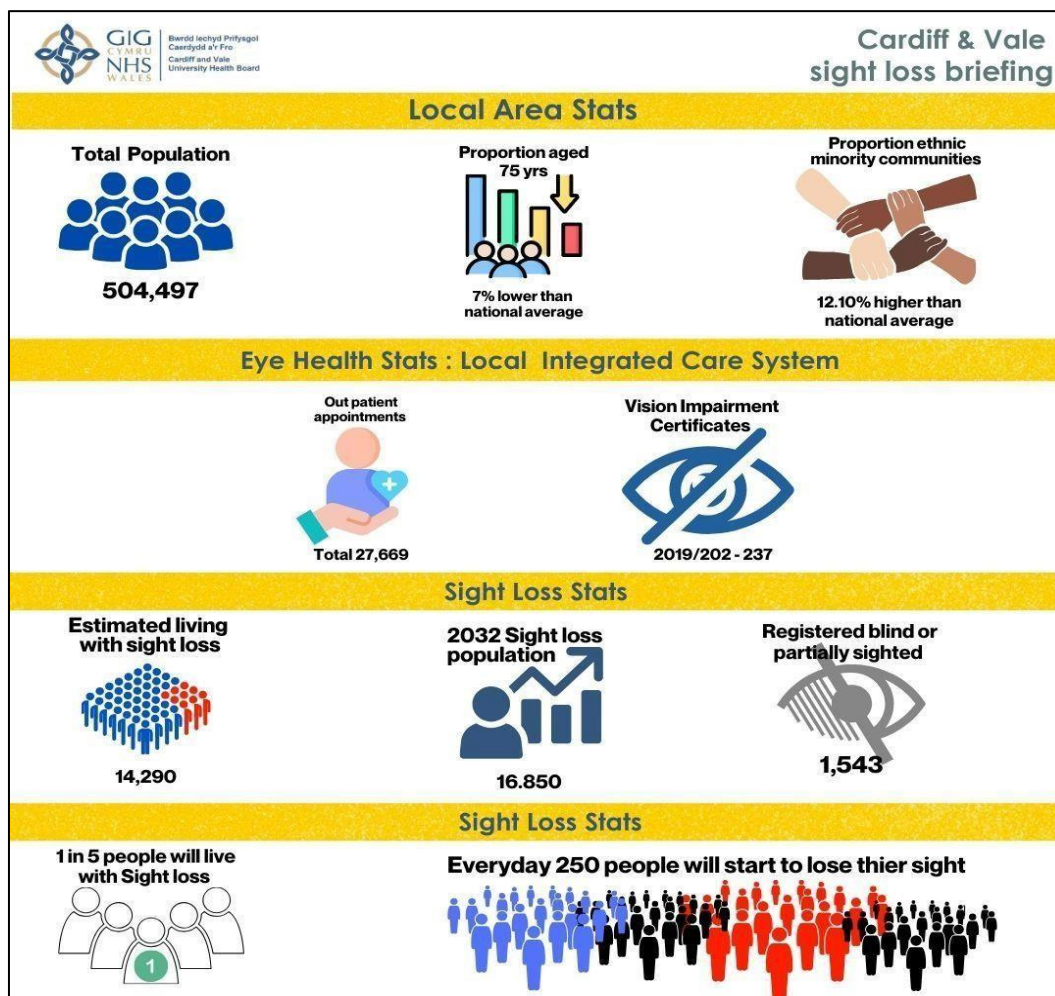
Diabetes

Diabetes can cause several health complications affecting the eyes. Diabetic retinopathy, cataract, and glaucoma are all conditions linked to diabetes. There may be an increased risk of other eye conditions with a diabetes diagnoses including those that affect the cornea, eye muscle problems or retinal vessel occlusion (a blocked retinal blood vessel). In Cardiff and Vale 6.85% of the population has Diabetes (37,000 people).

Hypertension

Hypertension can raise the risk of developing glaucoma and macular degeneration, both of which can impair vision. Managing blood pressure through a healthy lifestyle and regular medication is crucial to prevent these complications. Regular eye exams are also important for early detection and treatment. Prevalence data highlights that 12.81% (69,000) of the population are living with Hypertension.

Sight Loss in Cardiff and Vale



Source RNIB Sight Loss Data Tool Version 2
Date created March 2023

People living with sight loss in Cardiff and Vale

Of the estimated 14,290 people living with sight loss, this includes around:

- 9,210 people living with mild sight loss.
- 3,190 people living with moderate sight loss.
- 1,880 people living with severe sight loss.

The estimated prevalence of sight loss in Cardiff and Vale UHB is 2.90% which is lower the average for Wales (3.8%). This estimate is based on age and gender. A range of other factors could potentially impact on the prevalence of sight loss in the local area including higher proportions of people from ethnic minority communities, the number of people in low-income households and access to healthcare services.

Future projections

By 2032 there are expected to be 16,850 people in the CAV UHB living with sight loss, an estimated increase of 18% over the next decade.

Table 8: Estimated prevalence of sight loss over time, by severity.

Severity of sight loss	2022	2032
Mild sight loss	9,210	10,850
Moderate sight loss	3,190	3,750
Severe sight loss	1,880	2,260
Total	14,290	16,850

*Source: RNIB Sight Loss
Date created: March 2023*

Impact of sight loss

According to the RNIB (2023) many visually impaired children are educated in inclusive (mainstream) education, but many children are being deprived of specialist support due to variation in service provision, and learning materials and exams are not consistently made available in alternative formats. This results in lower educational attainment compared to children without a special educational need. Around half of children with a vision impairment will have additional disabilities and additional special educational needs.

People with sight loss have a lower employment rate compared to the UK average. The majority of blind and partially sighted say that they feel that their sight loss has stopped them reaching their full potential at work.

Many blind and partially sighted people have reduced opportunities to do the things they would like to take part in. This includes general leisure pursuits, and things like sports and fitness, civic and cultural engagement, and access to volunteering opportunities.

Many blind and partially sighted people are also living with other health problems or disabilities. Sight loss is linked to age, and as we get older, people are more likely to be living with many health conditions at the same time.

In Cardiff and Vale UHB, it is estimated that:

- 1,780 people with sight loss aged over 65 experience a fall per year.
- Of these falls, 840 are directly attributable to sight loss.
- 140 people aged over 65 with sight loss experience a severe fall per year (here, a severe fall is defined as a fall that results in hospital admission through A&E).
- Of these severe falls, 70 are directly attributable to sight loss.

Other population characteristics in Cardiff and Vale - Homeless People, Prisoners, and Travellers

Cardiff and Vale UHB host the Cardiff and Vale Inclusion Service to address the needs of patients who do not or may have difficulty in accessing traditional models of healthcare. The concept of inclusion health typically encompasses people experiencing homelessness, vulnerable migrants, sex workers, Gypsies, and Travellers and those in contact with the criminal justice service. These marginalised populations share common overlapping risk factors for poor health that include poverty, adverse life experiences, discrimination, violence, and complex trauma. These risk factors, accompanied with multiple barriers and negative

experiences when attempting to access health and care services, result in significantly poorer health outcomes, putting those affected beyond the extreme end of the gradient of health inequalities.

The impact of this extreme structural exclusion impacts on the ways in which health inclusion groups try to access care, often presenting reactively to urgent and emergency care services with complex presentations involving multiple, chronic conditions that are poorly controlled. This creates significant costs for public services, in addition to the human costs for individuals and their families. Yet inequitable access to healthcare and poor health outcomes are not inevitable or unalterable and can be prevented, or mitigated, by health and social care services working in partnership to provide tailored care that addresses the patient's total health, care, and social needs. Health, and its partners, have both a fundamental role and moral obligation to develop and invest in inclusion health interventions.

The Impact of Limited Access on Eye Care

For these groups, the lack of access to eye care services can have severe consequences. Vision problems can go undetected and untreated, leading to a decline in overall quality of life, increased dependency on others, and, in some cases, complete loss of sight. Additionally, poor vision can impact their ability to engage in daily activities, maintain employment, or, in the case of prisoners, successfully reintegrate into society upon release.

Table 9: A table describing the population totals and trends for health excluded populations in Cardiff and the Vale of Glamorgan.

Population	Total for CAV UHB	Future Trend
People experiencing homelessness	2,265 households on statutory assessment (for all of 2020/21); currently 1,600 estimated to be experiencing core homelessness	Stable, predicted to gradually decline
People engaged in sex work	100-1,000 estimated (note the wide range reflects methodology and the difficulty of estimating this group)	Unknown, estimated to be stable
Vulnerable migrants	1,300-1,500 asylum seekers currently; 40-50 resettled refugees per year; unknown number of undocumented migrants	Increase for asylum seekers and refugees (reflecting Ukraine conflict); unknown for undocumented migrants
People recently released from prison	Currently 1,967 released under licensed supervision in Cardiff	Stable
	& Vale from the National Probation service	
Gypsy and Traveler communities	524 on 2011 census, 227 caravans on latest count	Stable, gradual increase in Cardiff

Total	5,500-6,700	Overall stable
--------------	--------------------	-----------------------

Source: Cardiff and Vale Health Inclusion Service, Health Inclusion Report Version 1.4 October 2022

Homeless People

Homeless individuals often struggle with accessing healthcare due to various socio-economic and logistical barriers. Without a fixed address, they may be unable to register with a general practitioner (GP) or access an optometry practice, which limits their access to free General Ophthalmic Services (GOS) sight tests. Additionally, financial constraints and competing priorities, such as finding shelter and food, often mean that eye care is not seen as an immediate need.

Furthermore, many homeless individuals suffer from chronic health conditions, including diabetes, substance use disorders, and mental health issues, all of which can impact eye health. Without regular screening, conditions like diabetic retinopathy, glaucoma, and cataracts may go undiagnosed and untreated, leading to irreversible vision loss.

Adult Prisoners in HMP Cardiff

Prisoners also face challenges in accessing timely and appropriate eye care. Although healthcare services, including optometry, are available in many prisons, there can be long waiting times and limited resources. Prisoners may have difficulty getting appointments due to institutional bureaucracy, staff shortages, or a lack of prioritisation of eye health within prison healthcare systems.

Moreover, prisoners often experience higher rates of underlying health conditions, including diabetes and hypertension, both of which can have serious consequences for vision if not managed properly. Regular eye tests and screening for sight-threatening conditions may not be as easily accessible in prison settings, putting inmates at increased risk of undiagnosed and untreated eye diseases.

Traveller Community

The Traveller community, which includes Gypsies, Roma, and other nomadic groups, often faces additional obstacles in accessing sight care services due to their mobility and difficulty in registering with healthcare providers. Many Travellers move frequently, which disrupts the continuity of care and makes it challenging to schedule and attend regular eye tests. Additionally, there may be a lack of awareness or trust in mainstream healthcare services, as well as cultural and language barriers that further hinder access.

For individuals within the Traveller community who have chronic conditions like diabetes, regular screening for diabetic retinopathy may be inconsistent or unavailable due to their transient lifestyle. This lack of continuous monitoring increases the risk of undetected eye conditions leading to significant visual impairment.

Vision Rehabilitation in Cardiff and Vale of Glamorgan

Vision rehabilitation is a critical service for individuals experiencing sight loss, mandated under the Social Services and Wellbeing (Wales) Act 2014. When someone is certified as visually impaired, they are entitled to a specialist sensory assessment to determine their needs for support, separate from general care

assessments. The recent revision of the CVI(W) emphasises this entitlement, reinforcing the essential role of a Vision Rehabilitation Specialist (VRS) in supporting individuals with sight loss.

VRSs play a key role in helping individuals navigate the challenges of daily life. They assess the risks associated with vision impairment and provide tailored solutions, including training, equipment, and environmental modifications. These interventions help individuals retain their independence and confidence, reducing the need for long-term social care, minimising hospital admissions, and improving overall quality of life.

Despite the importance of vision rehabilitation, the Wales Council of the Blind (2024) highlights a shortage of VRSs in Cardiff and the Vale of Glamorgan. Cardiff requires 5.1 full-time equivalent (FTE) VRSs but currently has only 1 FTE VRS. A trainee VRS, funded by Sight Cymru, is in training to help address this gap. Similarly, Vale of Glamorgan needs 1.9 FTE VRSs but currently has just 1 FTE VRS, with plans to recruit a trainee by September 2025.

In Cardiff, the VRS service is integrated with Sight Life, a third-sector organisation that provides initial advice, promotes independence, and refers individuals to social services for further assessments. The VRS is contracted through Sight Cymru, which manages professional support, while the Council oversees workload allocation and monitoring. In the Vale of Glamorgan, Sight Cymru provides the sole VRS, working in partnership with the local authority.

Financial analysis from the Office of Public Management (2017) demonstrates the cost-effectiveness of vision rehabilitation. Each referral saves an estimated £4,487 by reducing reliance on social care and healthcare services. Additionally, falls among older people cost NHS Wales £2.3 billion annually, with half of these incidents linked to sight loss. Early rehabilitation interventions that focus on safe movement at home and outdoors can significantly reduce these falls, cutting healthcare costs (College of Optometrists, 2020).

Third-sector organisations play a vital role in supporting individuals while they wait for treatment. Eye Care Liaison Officers (ECLOs), embedded within clinics, facilitate referrals to rehabilitation services. Additionally, low-vision optometrists identify patients who may need support and direct them to the appropriate services. More information on third-sector support in the Cardiff and Vale University Health Board area is available at [Wales Council of the Blind](#).

Current Service Provision

Cardiff and Vale Homeless Service Ty Ephraim, Cardiff.

An Optometrist currently volunteers at one Cardiff Council Homeless site and provides bi-monthly sessions to residents as well as walk ins. There are ongoing discussions between Cardiff and Vale UHB and Welsh Government to launch a homeless service in Cardiff and Vale. This new homeless service would align to WGOS in the same way that other static and mobile optometry providers do.

HMP Cardiff Optometry Service

HMP Cardiff is a remand centre (Category B) covering the courts of south-east Wales with space for up to 800 men. In December 2024, following a successful procurement exercise, a contract was awarded to the existing prison Optometry service provider for a period of two years. The provider, 'The Prison Opticians Company' provides 2 sessions per calendar month at HMP Cardiff and operates for 48 weeks per year and sees on average 10 patients per week.

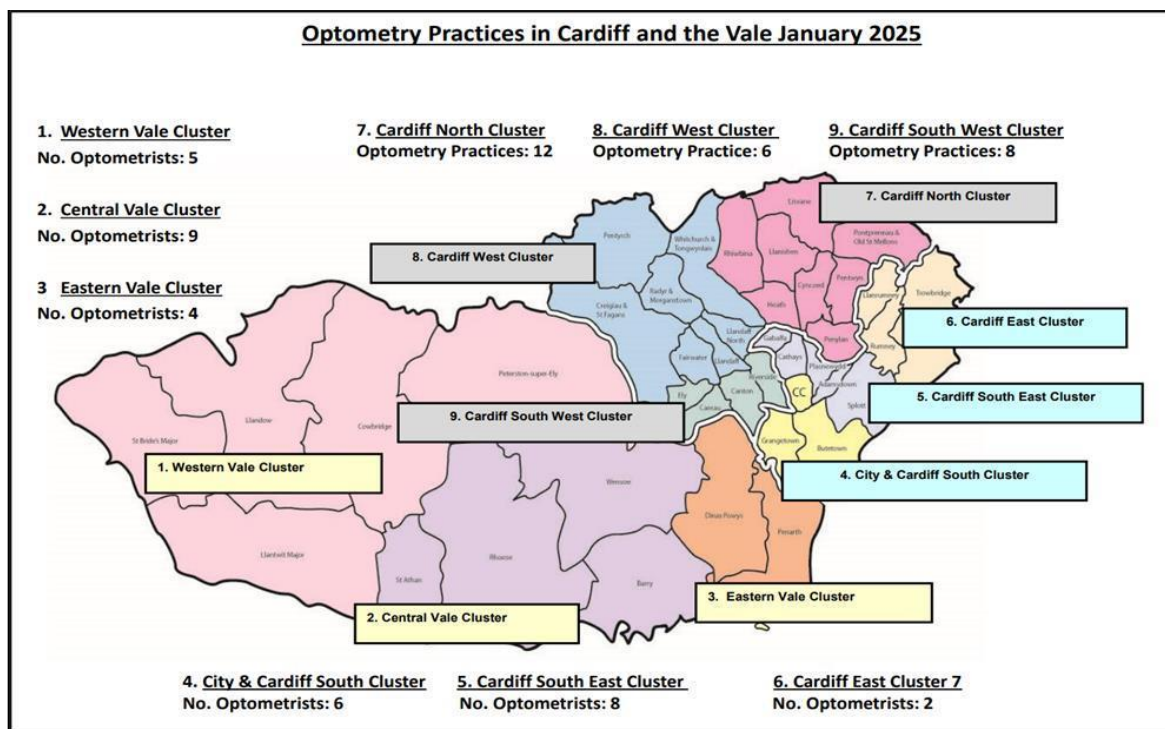
Wales General Ophthalmic Services Provision in Cardiff and Vale

The introduction of Wales General Ophthalmic Services (WGOS) on 20 October 2023, saw the unification of the service architecture, governance, and evaluation across Wales to provide care closer to home and ensure that people only attend secondary care when required. WGOS is a tiered Service comprising of the following:

- WGOS 1:** Sight test and patient management plan.
- WGOS 2:** Made up of three bands:
- Band 1 – Acute eye care and accept referrals from another healthcare professional.
 - Band 2 - Further examination to inform or prevent a referral.
 - Band 3 - Follow up to Band 1 and Post Cataract Assessment.
- WGOS 3:** Replaces the existing Low Vision Service, assessing those with low vision and providing low vision aids where appropriate, as well as holistically supporting the patient and providing rehabilitative support. This Service also allows Optometrists, listed to provide. WGOS 1,2 and 3; to provide Certification of Vision Impairment in Primary Care for patients whose leading cause of vision loss is Dry Age-Related Macular Degeneration
- WGOS 4:** Service where patients who would previously have been referred to/or managed in the Hospital Eye Service (HES) instead remain in primary care for further enhanced assessment as part of an agreed referral refinement or monitoring pathway.
- WGOS 5:** Provision of eye care services in primary care that require an independent prescriber Optometrist/OMP to manage, treat and monitor patients to prevent onward referral.
Optical vouchers: provision of optical appliances.

Cardiff and Vale UHB WGOS 1-5 Provision Levels January 2025

Static Optometry Practices: 59 (including Cardiff University site) Mobile Providers: 11 providers offering domiciliary services.



WGOS Services within primary care are currently provided by the following:

Table 10: Mobile Providers in Cardiff and Vale.

Cluster Base	Practice Name	Lead Practitioner	Tel No
NA	The Outside Clinic	Nick Wingate / Matthew Burford Co7a4150@wales.nhs.uk nick.wingate@wales.nhs.uk matthew.burford@wales.nhs.uk	01793 648688
Central Vale	Specsavers Home Visits	Jason Scaife Djvp.catvog.uk@specsavers.com	01446 508128
Central Vale	Jones & Jones	Adrian Jones Co7a4476@wales.nhs.uk	01446 400015
Western Vale	Home Eye Care Wales	Lisa Evans Lisa.Evans43@wales.nhs.uk	07756 420965
Eastern Vale	Home Optika	Hector Marcus homeoptika@gmail.com / Hector.marcos@wales.nhs.uk	07743 847807
City & south	Darlington Opticians	Philip Darlington Philip.Darlington@wales.nhs.uk	07882 200983
City & south	Optical Healthcare Ltd	Paul McGinley Opticall@hotmail.co.uk	NA
Cardiff West	JR Lane Opticians	Jason Lane jrlaneopticians@yahoo.co.uk	02920 568885
Cardiff North	Home Vision Visits	Umayr Ali Homevisionvisits@outlook.com	02922 520453
Cardiff East	@Home Healthcare	Matthew Barefoot info@home-hub.co.uk	07592 195453

Table 11: Static Providers in Cardiff and Vale.

Cluster	Static Practices (including Cardiff University)	Address		Postcode
Cardiff East	Julian Davies Opticians, St Mellons	14 Crickhowell Road	St Mellons	CF3 0EF
Cardiff East	Stamford Optical	10 Countisbury Avenue	Llanrumney	CF3 5RN
Cardiff North	Beresford Opticians	37 Wellfield Road	Roath	CF24 3PA

Cardiff North	Julian Davies Opticians, Llanedeyrn	Unit 3, Lewis Court, Maelfa	Llanedeyrn	CF23 9PL
Cardiff North	Kingman Optometrists	3a Beulah Road	Rhiwbina	CF14 6LT
Cardiff North	Medi-Optics Opticians, Llanishen	3 Thornhill Road	Llanishen	CF14 6PD
Cardiff North	Medi-Optics Opticians, Roath	12 Maryport Road	Roath Park	CF23 5JX
Cardiff North	Parish Opticians	101 Caerphilly Road	Birchgrove	CF14 4AE
Cardiff North	Pearce & Blackmore, Llanishen	Church School House, 2Heol Hir	Llanishen	CF14 5AE
Cardiff North	Pearce & Blackmore, Pentwyn	St Davids Medical Centre, Pentwyn Drive	Pentwyn	CF23 7SD
Cardiff North	Robert E Lloyd Ltd.	310 Heathwood Road	Birchgrove	CF14 4HT
Cardiff North	Specsavers, Llanishen	Unit 1B Ty Glas Retail Park	Llanishen	CF14 5DU
Cardiff North	Stewart Greenberg Opticians	59 Wellfield Road	Roath	CF24 3PA
Cardiff South East	Cardiff University Eye Clinic, School of Optometry	Maindy Road	Cathays	CF24 4LU
Cardiff South East	Chalmers Opticians	36 Albany Road	Roath	CF24 3RQ
Cardiff South East	City Eyecare	Cardiff Royal Infirmary, Newport Road	Roath	CF24 0SZ
Cardiff South East	Direct Eyecare Opticians	12 Clifton Street	Splott	CF24 1PX
Cardiff South East	Eye 2 Eye Opticians	82 Crwys Road	Cathays	CF24 4NP
Cardiff South East	RN Roberts Optometrists	280-282 North Road	Gabalfa	CF14 3BN
Cardiff South East	Specsavers, Albany Rd	59 Albany Road	Roath	CF24 3LL
Cardiff South East	Vision Express, Tesco Western Avenue	Excelsior Drive	Gabalfa	CF14 3AT
Cardiff South West	A&C Opticians	182 Cowbridge Road East	Ely	CF11 9NE

Cardiff South West	Canton Optical Ltd.	232 Cowbridge Rd East	Canton	CF5 1GY
Cardiff South West	Costco Optical	Capital Retail Park	Leckwith	CF11 8AZ
Cardiff South West	iCare Opticians	253 Cowbridge Road West	Ely	CF5 5TD
Cardiff South West	Marks & Spencer Opticians, Culverhouse Cross	Copthorne Way, CulverHouse Cross	Ely	CF5 6YX
Cardiff South West	Perfect Vision	100 Cowbridge Road East	Canton	CF11 9DX
Cardiff South West	Specsavers, Leckwith	Pod 2, Unit 2, Capitol Shopping Park	Leckwith	CF11 8AZ
Cardiff South West	Vision Express, Culverhouse Cross	Culverhouse Cross	Ely	CF5 6XQ
Cardiff West	Asda Vision Centre	Longwood Drive	Coryton	CF14 7EW
Cardiff West	Fairwater Green Opticians	3 Chesnut Road	Fairwater	CF5 3HR
Cardiff West	J R Lane Ltd.	96b Station Road	Llandaff North	CF14 2FG
Cardiff West	Julian Davies Opticians, Whitchurch	32 Merthyr Road	Whitchurch	CF14 1DD
Cardiff West	Julian Davies Opticians, Llandaff	52 High Street	Llandaff	CF5 2DZ
Cardiff West	Radyr Eyecare Ltd.	14 Station Road	Radyr	CF15 8AA
City & South	Boots Opticians	36 Queen Street	Cardiff	CF10 2RG
City & South	Darlington Opticians	144 Clare Road	Grangetown	CF11 6RW
City & South	Direct Eyecare Opticians	42a Corporation Road	Grangetown	CF11 7AU
City & South	John Lewis Opticians	John Lewis Stores	Cardiff	CF10 1EG
City & South	Specsavers, Queen Street	90-92 Queen Street	Cardiff	CF10 2GR
City & South	Vision Express, St Davids	22 Cathedral Walk, St Davids Centre	Cardiff	CF10 2DS

Central Vale	Annette Dobbs Eyecare	40 Tynwydd Road	Barry	CF62 8AZ
Central Vale	Arbuthnot Opticians, Barry	6 Broad Street	Barry	CF62 7XP
Central Vale	Asda Opticians Barry	Fford Y Mileniwm	Barry	CF62 5AT
Central Vale	Barry Eye Centre	87 Holton Road	Barry	CF63 4HG
Central Vale	Jones & Jones Optometrists	70 High Street	Barry	CF62 7DZ
Central Vale	O'Sullivan's Opticians, Barry	32 Holton Road	Barry	CF63 4HA
Central Vale	O'Sullivan's Opticians, Rhoose	9 Fontygary Road	Rhoose	CF62 3DR
Central Vale	Specsavers, Barry	85 Holton Road	Barry	CF63 4HJ
Central Vale	Vale Eye Care	Highlight Park Medical Centre	Barry	CF62 8GP
Eastern Vale	Arbuthnot Opticians, Penarth	12 Cornerswell Road	Penarth	CF62 2UZ
Eastern Vale	Osmond Drake	107 Glebe Street	Penarth	CF64 1ED
Eastern Vale	Penarth Eye Centre	7 Windsor Road	Penarth	CF64 1JB
Eastern Vale	Specsavers, Penarth	10 Windsor Road	Penarth	CF64 1JH
Western Vale	Chris Williams Opticians	Newton House, East Street	Llantwit Major	CF61 1XY
Western Vale	Gwyneth Morgan	Gwynfa, 3 Boverton Road	Llantwit Major	CF61 1XZ
Western Vale	Nina Davies	6 Barons Close House, East Street	Llantwit Major	CF61 1XY
Western Vale	Robert E Lloyd Ltd	49 High Street	Cowbridge	CF71 7AE
Western Vale	Specsavers, Cowbridge	27 High Street	Cowbridge	CF71 7AE

Table 12: WGOS 3 Low Vision Service Wales providers across Cardiff and the Vale.

Cluster	Practice	Address		Postcode
Cardiff East	Julian Davies Opticians, St Mellons	14 Crickhowell Road	St Mellons	CF3 0EF
Cardiff East	Stamford Optical	10 Countisbury Avenue	Llanrumney	CF3 5SJ
Cardiff North	Julian Davies Opticians, Llanedeyrn	Unit 3, Lewis Court, Maelfa, Llanedeyrn	Llanedeyrn	CF23 9PL

Cardiff North	Kingman Opticians	3A Beulah Road, Rhiwbina	Rhiwbina	CF14 6LT
Cardiff North	Parish Opticians	101 Caerphilly Road, Birchgrove	Birchgrove	CF14 4AE
Cardiff North	Pearce & Blackmore, Llanishen	Church School House, 2 Heol Hir	Llanishen	CF14 5AE
Cardiff North	Pearce & Blackmore, Pentwyn	St David Medical Centre	Pentwyn	CF23 7SD
Cardiff North	Specsavers, Llanishen	Unit 1B Ty Glas Retail Park	Llanishen	CF14 5DU
Cardiff South East	Cardiff University Eye Clinic, School of Optometry	Maindy Road	Cathays	CF24 4HQ
Cardiff South East	Chalmers Opticians	34-36 Albany Road	Cardiff	CF24 3RQ
Cardiff South East	RN Roberts Optometrists	282 North Road	Gabalfa	CF14 3BN
Cardiff South East	Specsavers, Albany Road	59 Albany Road	Roath	CF24 3LL
Cardiff South West	Canton Optical Ltd	232 Cowbridge Road East	Canton	CF5 1GY
Cardiff South West	iCare Opticians	253 Cowbridge Road West	Ely	CF5 5TD
Cardiff South West	Perfect Vision	100 Cowbridge Road East	Canton	CF11 9DX
Cardiff West	Fairwater Green Opticians	3 Chesnut Road	Fairwater	CF5 3HR
Cardiff West	Julian Davies Opticians, Whitchurch	32 Merthyr Road	Whitchurch	CF14 1DH
Cardiff West	Julian Davies Opticians, Llandaff	52 High Street	Llandaff	CF5 2DZ
Cardiff West	Radyr Eyecare Ltd	14 Station Road	Radyr	CF15 8AA
City & South	Specsavers, Queen Street	90-92 Queen Street	Cardiff	CF10 2GR
Central Vale	Annette Dobbs Eyecare	40 Tynnewydd Road	Barry	CF62 8AZ
Central Vale	Arbuthnot Opticians, Barry	6 Broad Street	Barry	CF62 7XP
Central Vale	Jones & Jones Optometrists	70 High Street	Barry	CF62 7DZ

Central Vale	O'Sullivan's Opticians, Barry	32 Holton Road	Barry	CF63 4HD
Central Vale	O'Sullivan's Opticians, Rhoose	9 Fontygary Road	Rhoose	CF62 3DR
Eastern Vale	Arbuthnot Opticians, Penarth	12 Cornerswell Road	Penarth	CF64 2UZ
Eastern Vale	Osmond Drake Opticians	107 Glebe Street	Penarth	CF64 1ED
Eastern Vale	Specsavers, Penarth	10 Windsor Road	Penarth	CF64 1JH
Western Vale	Gwyneth Morgan	Gwynfa, 3 Boverton Road	Llantwit Major	CF61 1XZ
Western Vale	Nina Davies	6 Barons Close House, East Street	Llantwit Major	CF61 1XY
Western Vale	Specsavers, Cowbridge	27 High Street	Cowbridge	CF71 7AE

Table 13: WGOS 4 Glaucoma Filtering and Glaucoma Monitoring providers across Cardiff and the Vale.

Cluster	Practice Name	WGOS 4 GF/GM Provider(s)	Address		Post Code
Cardiff North	Kingman Opticians	Emily Kingman	3a Beulah Road	Rhiwbina	CF14 6LT
Cardiff North	Medi-Optics Opticians	Dr David Woolf	12 Maryport Road	Roath	CF23 5JX
Cardiff North	Robert E Lloyd	David Lloyd	310 Heathwood Road	Birchgrove	CF14 4HT
Cardiff South East	Cardiff University Eye Clinic	Gavin Howells	Maindy Road	Cathays	CF24 4LU
		Geraint Jones			
		Angela Whitaker			
		Grant Robinson			
Cardiff South East	Direct Eyecare	Pervaze Jan	42a Corporation Road	Canton	CF11 7AU
City & South	Direct Eyecare	Pervaze Jan	12 Clifton Street,	Cardiff	CF24 1PX
Central Vale	Jones & Jones	Dr Adrian Jones	70 High Street,	Barry	CF64 2WF
Western Vale	Chris Williams Optometrist	Chris Williams	Newton House, East Street	Llantwit Major	CF61 1XY
Western Vale	Nina Davies	Nina Davies	6 Barons Close House, East Street	Llantwit Major	CF61 1XY

Western Vale	Robert E Lloyd	David Lloyd	49 High Street	Cowbridge	CF71 7AE
Western Vale	Specsavers, Cowbridge	Adam Thomas	27 High Street	Cowbridge	CF71 7AE

Table 14: WGOS 5 IPOS Urgent providers across Cardiff and Vale.

Cluster	Practice Name	IP Name	Address	Post Code	Tel No
Vale Central	Vale Eyecare	Tanya McNabb	Highlight Park Medical Centre, Barry	CF62 8GP	01446 484114
Vale Central	Jones & Jones	Adrian Jones	70 High Street, Barry	CF64 2WF	01446 400015
		Hector Marcos			
Vale West	Robert E Lloyd	David Lloyd	49 High Street, Cowbridge	CF71 7AE	01446 773191
Vale West	Chris Williams Optometrist	Chris Williams	Newton House, East Street, Llantwit Major	CF61 1XY	01446 790590
Vale East	Osmond Drake	Marc Drake	107 Glebe Street, Penarth	CF64 1ED	02920 709526
		Hannah Jones			
		Claire Baldwin			
Vale East	Penarth Eye Centre	Hector Marcos	7 Windsor Road, Penarth	CF6 1JB	02920 712053
Vale East	Specsavers Penarth	Andrew Moss	10 Windsor Road, Penarth	CF64 1JH	02920713900
Cardiff North	Robert E Lloyd	David Lloyd	310 Heathwood Road, Birchgrove	CF14 4HT	02920 754087
Cardiff North	Medi-Optics Opticians	Dr David Woolf	12 Maryport Road, Roath	CF23 5JX	02920 764963
Cardiff North	Kingman Opticians	Emily Kingman	3a Beulah Road, Rhiwbina	CF14 6LT	02920 611283
Cardiff South East	Cardiff University Eye Clinic	Multiple	Maindy Road, Cathays	CF24 4LU	02920 874357
Cardiff South East	R N Roberts	Rowanne Black	280-282 North Road, Gabalfa	CF14 3BN	02920 621086
Cardiff South East	Specsavers Albany Road	Jessica Borley	59 Albany Road Cardiff	CF24 3LL	02920 437220
Cardiff South East	Chalmers Opticians	Daniel Franks	36 Albany Road	CF24 3RQ	02920 487375
City & South	Direct Eye Care	Pervaze Jan	14 Clifton Street, Cardiff	CF24 1PX	Mon-Fri 02920 480600 Weekends 07983797938
Cardiff West	Julian Davies	Daniel Franks	52 High Street, Llandaff	CFS 2DZ	02920 566024
Cardiff South West	Costco Optical	Fawzia Mohamad	Capital Retail Park	CF11 8AZ	02920 787535
Cardiff East	Julian Davies Opticians	Daniel Franks	14 Crickhowell Road, St Mellons	CF3 0EF	02920 363377
C&V	Domiciliary Provider	Hector Marcos	Domiciliary IP Provider	NA	07743 847807

Table 15: Implementation of the New Optometry Contract - WGOS Progress.

WGOS	Timescale	Progress (*in accordance with current WGOS pathways; these are likely to increase in scope)
WGOS 1,2 & 3	20 th October 2023	Implemented
WGOS 4 Glaucoma Filtering Glaucoma Monitoring Medical Retina Filtering Medical Retina Monitoring	7 th October 2024 4 th November 2024 February 2025 (phased) Spring 2025 (phased)	Implemented Implemented Lauch February 2025 Lauch TBC once Regional Coordinator recruited
WGOS 5 Urgent Independent Prescribing Service (IPOS)	20 th January 2024	Implemented

Table 16: Number of WGOS activity claims 2024 -2025 (to date).

Activity	WGOS1	WGOS2	WGOS3	WGOS4	WGOS5	Total
Apr-24	10,971	4,542	69	249	488	16,319
May-24	11,082	4,531	66	262	506	16,447
Jun-24	11,168	5,004	55	195	602	17,024
Jul-24	11,372	5,030	121	231	542	17,296
Aug-24	10,575	4,880	107	164	572	16,298
Sep-24	10,438	4,422	75	156	454	15,545
Oct-24	10,345	4,328	63	229	461	15,426
Nov-24	11,800	5,327	53	172	519	17,871
Dec-24	11,681	5,087	117	134	595	17,614
Jan-25	8,232	3,714	61	48	412	12,467
Total	107,664	46,865	787	1,840	5,151	162,307

Source -NWSSP monthly activity claimed reports 2024/2025.

Accelerated Cluster Development/Optometry Collaboratives

Primary care clusters where primary care services are coordinated on a geographical locality basis, bring together the collaborative leads from each contractor profession (Optometry, Pharmacy, GMS, and Dentistry) and from other sectors such as Allied Health Professionals and Third Sector operators within a cluster area.

Clusters are allocated budgets which they can use to improve service provision to local populations through a variety of means. Clusters also have a key role in supporting local health needs assessments, allocating appropriate resources, and forecasting the potential future demand on primary care.

All optometry contractors must attend at least four meetings of the relevant optometry collaborative in each financial year and vote in the election of the optometric lead of the relevant optometry collaborative. For the purposes of complying with contractual requirements, each contractor may appoint an individual who is an optometrist, an ophthalmic medical practitioner, or a dispensing optician to act on the contractor's behalf. This requirement is mandatory and is set out to all contractors in *2023 No. 1053 (W. 179) The National Health Service (Ophthalmic Services) (Wales) Regulations 2023*.

The Primary Care Collaborative Optometric Lead will play a critical role in shaping the engagement and providing leadership and representation for optometric practices within the Primary Care Cluster. The lead will work closely with optometric practices in the Primary Care Cluster, identifying areas of concern and escalating issues (if required) through the appropriate channels, discussing service change and communicating with practices around the delivery of optometry services, which are aligned to national priorities and specifically those of the Primary Care Cluster. The Collaborative Lead will be representing the professional collaborative and therefore will share their views at the Primary Care Cluster as well as sharing the views from the Primary Care Cluster back with the professional Collaborative.

At present, CAV UHB have 7 of the 9 collaborative lead roles filled, there are currently vacancies in both Central Vale Cluster and Cardiff East Cluster. The attendance at these meetings is improving, with the Health Board taking a non-punitive approach to facilitate attendance. However, due to continued non-compliance in certain clusters an All-Wales Breach Process has been prepared and agreed by the All-Wales Eye Care Wales Committee (ECWC, Jan 2025) in readiness for application from April 2025 as well maintaining regular reminders and contact with the non-engaging contractors.

Table 17: Collaborative Meeting Attendance 2024/2025.

Cluster	Q1 Attendance (practice engagement)	Q2 Attendance (practice engagement)	Q3 Attendance (practice engagement)
Central Vale	78%	100%	100%
Western Vale	100%	100%	100%
Eastern Vale	100%	100%	100%
City & South	67%	83%	83%
Cardiff east	100%	0%	50%
Cardiff South East	50%	87.5%	100%
Cardiff North	75%	92%	67%
Cardiff west	83%	83%	67%
Cardiff South West	75%	75%	12%

Demand and unmet need for WGOS.

Access to data is limited currently, therefore this section will evolve in future versions of the EHNA as additional WGOS pathways are implemented to track demand and prevalence.

Table 18: Provision of WGOS providers per cluster as of January 2025.

Optometry Practices per cluster providing WGOS	WGOS 1	WGOS 2	WGOS 3	WGOS 4	WGOS 5
Central Vale	8	8	5	2	2
Western Vale	5	5	3	4	2
Eastern Vale	4	4	3	NA	3
City & South	6	6	1	1	1
Cardiff East	2	2	2	1	NA
Cardiff South East	8	8	4	2	4
Cardiff North	11	11	6	3	3
Cardiff West	6	6	5	NA	1
Cardiff South West	8	8	3	NA	2
Mobile/Domiciliary providers	11	11	3	NA	1
Practice (static and mobile) Total	70	70	35	13	16

Next steps

- **WGOS4 Glaucoma Filtering Secondary Care Long-Wait patients.**

Collaboration between Primary Care and Secondary Care to address long-wait patients (over 104 weeks) on the Glaucoma Filtering Secondary Care waiting list. As part of this effort to reduce the list, an urgent waiting list initiative will see eligible patients seen in Primary Care by WGOS4 Glaucoma Filtering providers from February and will continue until May 2025.

- **Implementation of WGOS4 Medical Retina**

25 providers (across 28 sites) in CAV will be providing WGOS4 Medical Retina services (filtering, monitoring, and Hydroxychloroquine (HCQ) monitoring) by the end of February 2025. Access to data is limited currently, therefore this section will evolve in future iterations of the EHNA as additional WGOS pathways are implemented to track demand and prevalence.

Currently, as part of the Transition Plan 2024, Cardiff University provide Medical Retina services ((filtering, monitoring, and Hydroxychloroquine monitoring) to Secondary Care patients. This service will cease once

WGOS4 Medical Retina in Primary Care is implemented, and Cardiff University will become a Primary Care provider in line with all other contractors.

- **Recruitment of a WGOS Regional Coordinator (over Cardiff and Vale, Aneurin Bevan, and Cwm Taf Morgannwg UHB)**

Commencing in April 2025, as part of Transformation funding, the Welsh Government has stipulated that Health Boards appoint a Regional Coordinator for South East Wales. This role will be instrumental in streamlining patient pathways, ensuring the efficient and timely transfer of patients from secondary to primary care. As this role evolves, data will be made available on the transfer of patients from secondary to primary care to receive services under WGOS pathways closer to home.

Workforce data

Access to data is limited currently, therefore this section will evolve in future versions as more data is readily available. Currently, there is no dedicated workforce planning tool available for Optometry. However, Health Education and Improvement Wales (HEIW) has plans to develop such a tool in the future to support Health Board's with workforce planning and service delivery.

As further WGOS pathways evolve and are implemented in Primary Care, Cardiff and Vale UHB, in collaboration with HEIW will provide opportunities for providers to complete advanced qualifications to support WGOS delivery in Cardiff and Vale. National workforce tools will be developed by NWSSP to enable the Health Board to collate and monitor this data to aid service planning.

Table 19 & 20: Summary of workforce with advanced qualifications.

	Medical Retina Filtering (MRF)	Medical Retina Monitoring (MRM)	HCQ Monitoring	Glaucoma Filtering (GF)	Glaucoma Monitoring (GM)
Professional Certificate Glaucoma	N	N	N	X	Y
Higher Certificate Glaucoma	N	N	N	Y	Y
Diploma Glaucoma	N	N	N	Y	Y
Professional Certificate Medical Retina	Y	Y	Y	N	N
Higher Certificate Medical Retina	Y	Y	Y	N	N
N	Not Relevant to the service				
Y	Qualification enables participation in the service				
X	Qualification does not enable participating in the service				

Cardiff and Vale UHB	Medical Retina Filtering (MRF)	Medical Retina Monitoring (MRM)	HCQ Monitoring	Glaucoma Filtering (GF)	Glaucoma Monitoring (GM)	Independent Prescribing
Number of individuals on the Performers list who hold the qualification	69	69	69	16	68	16

Source: NWSSP

Welsh language

Access to data is limited currently, therefore this section will evolve as more data is readily available to monitor contractual compliance.

The Welsh Language provisions in the *National Health Service (Ophthalmic Services) (Wales) Regulations 2023* require contractors providing primary ophthalmic services to:

1. **Notify the Local Health Board** if they offer services in Welsh.
2. **Provide Welsh versions** of documents or forms supplied by the Local Health Board for public use.
3. **Ensure bilingual signage**, with text in both English and Welsh.
4. **Use the Local Health Board's translation service** for signage if needed.
5. **Encourage Welsh-speaking staff** to wear a badge indicating their ability to speak Welsh.
6. **Promote Welsh language awareness** by encouraging staff to attend training on the language, its history, and its role in Welsh culture.
7. **Record language preferences** of patients to facilitate service delivery in their chosen language.

***NOTE The providers listed within this document was accurate at the time the report was written.**