

BLADDER AND BOWEL SERVICE CRITERIA FOR THE ISSUANCE OF CONTINENCE PAD PRODUCTS

Pad products for containment of incontinence are only supplied following a comprehensive assessment by a member of the Bladder and Bowel Service or an appropriate Health care professional. For adults the assessment tool of choice is the All Wales Bladder / Bowel care pathway (2006) Community and All Wales Continence Bundle (2013) Acute. However electronic records are currently being developed via WCCIS and NWIS. The service follows the all National and Nice guidelines for assessment and implements the Welsh Government / All Wales continence Forum consensus document for issuance of pad products 2021. For children see individual HB assessment documentation and Welsh Government Guidance, RCN and Bladder and Bowel UK Guidance for the provision of continence containment products to children and young people A consensus document 2021.

All assessments/reassessments will be undertaken by the Bladder and Bowel service in the community with the exception of terminal / palliative patients and children. Other exceptions may include sudden onset of incontinence after surgery e.g. prostate surgery where containment pads may be immediately provided. A comprehensive individualised assessment will lead to more timely interventions and treatments and less reliance on management with pad products (Yates, 2021). All orders will be submitted to the service electronically and be scrutinised and authorised by the Bladder and Bowel service PRIOR to going to Stores. ALL individual exceptions to the criteria in MUST be agreed by the Bladder and Bowel service. In Wales there is an 'All Wales' procuring process currently in place to standardise product formulary thus reducing variation and discrepancy through prudent health care (Public Health Wales, 2014, Welsh Government, 2018). Currently there is one supplier of pad products identified for All Wales.

- All adults in C&V UHB, including those in residential care homes, should be treated equally in relation to absorbencies and product choice.
- Containment products are used to support toileting regimes and individuals should not be told to urinate or defecate in a pad unless patient safety is compromised.
- Containment products should not be supplied for treatable bladder or bowel dysfunction or where alternative methods of management can be implemented e.g. urinals, urinary sheath, adapted underwear, and bowel management devices.

- C&VUHB provide containment pads with a working absorbency starting from 280mls. However, if an individual requires 2 or less products in the lowest absorbency range they will be advised to self –purchase.
- All adults may need to purchase products until assessment has taken place.
- Products are only issued to newly assessed children from the age of five who have a mental or physical disability and who, on assessment, are deemed to have insufficient bladder/bowel control. However clinical judgement can override this if clinical symptoms and presentation require. This must be discussed with the Paediatric / bladder / bowel service.
- Products WILL NOT be issued to children who have Enuresis or Encopresis as these are deemed treatable conditions.
- Reassessment of product need should be carried out annually or as needs/ circumstances change e.g. transition from child to adult, adults transferring into C&VUHB already assessed for containment products.
- The number of products issued should not normally need to exceed 4 in 24 hours (but may vary according to number of products per packet). However the comprehensive, individualised assessment may require the UHB to provide outside of this guidance in exceptional clinical circumstances. If there are no exceptional clinical circumstances then individuals will be informed of the need to self-purchase.
- Shaped pads must be recommended as first line option as they are indicated in most cases of pad management. Having to wear an all in one nappy type pad is undignified for both children and adults therefore they are **not recommended for first line choice and should not be issued to mobile patient's, patients who are toileted or with 24 hour care.**
- The maximum number of fixation pants to be issued is 2 pairs per month to clients already receiving them. No new clients will be issued with fixation pants, or existing patients who have not received them previously. These clients will be advised to purchase close fitting pants to secure pads or if net pants preferred advised to self-purchase and where from.
- Adults in Nursing Homes can access community continence services for advice, support and education. However, the local Health Board will not provide containment products.
- Containment products are NOT provided for menstruation, rectal bleeding or wound dressing regimes or any other bodily fluids other than urine / faeces.

- Reusable bed protection is not issued to clients receiving disposable pads / body worn products. Where bed protection is necessary, reusables should replace disposables wherever possible. A maximum of 3 per year will be issued to clients. These products are not suitable for faecal incontinence.
- Where reusable/washable pants are used as an alternative to disposable pads, 6 pairs can be supplied annually, along with information enabling the client to self-purchase extra pairs. These products are not suitable for faecal incontinence.
- Bed protection 40x60 disposable sheets - 1 in 24hrs - will be issued to clients that need special procedures, i.e. bowel prep (enemas, suppositories etc).
- Bed protection 60x60 disposable sheets should only be used for terminally ill clients or at the discretion of the Continence Service or is classed as one of the supplied products.
- The issuance of Pull up pants is provided only when the individual patient meets the criteria / flow chart for that particular product (see appendix 1 & 2). The amount provided will be identified on assessment BUT will be in line with all other products unless exceptional clinical need identified.
- Visitors (e.g. on holiday) to a locality will not have products provided for them.
- Containment products MUST only be used by the individual for whom they have been assessed
- All product orders have to be submitted electronically on a product order form with the relevant accompanying documentation. Orders not on the correct product order form will be returned to the relevant professional and may cause delay in patients receiving their products.
- Products will normally be delivered to patients homes by a delivery service at regular
- Intervals. Normally within 5 working days for new clients of stores receiving order form, terminally ill or discharge from hospital will take priority being delivered within 24-48 hours of stores receiving forms.
- Reassessments will have their order changed from the next delivery date.
- Inpatient services should adhere to a standard Health Board product formulary which aligns with community services. If clinical assessment identifies a need outside the formulary, advice must be sought from the continence service.

This criteria is produced in line with the Welsh Governments / All Wales Continence Forums Pad Guidance for the provision of continence containment products for adults in Wales (2022).

Appendix 1

Criteria for issuance of Pull up Pants

Guidance Criteria for Supply of Pull-up products to Adults Pull-ups will be provided based on clinical need and only with authorised signatory agreement.

All staff are responsible for managing resources effectively, efficiently and economically.

Please consider the following questions

Question 1

1. Have pads/nets been trialled and deemed inappropriate? (Including iD Expert Light Maxi in client's own tight-fitting underwear.

- a. Does the client remove pads/underwear and dispose of inappropriately?
- b. Does the client have severe problems with manual dexterity?

Question 2.

Does the client have a low urinary output with frequent episodes of incontinence and for reasons given above, pad/nets has been unsuccessful?

Question3.

Does the client have faecal incontinence?

Question 4.

Is the client independent overnight, able to self-toilet, but unable to manage pad and nets? - (iD Expert Light Maxi in patients own tight fitting underwear already prepared can be an equivalent to disposable pants)

Question5.

Can the client be difficult or aggressive?

- A. does this include when assistance with toileting is being provided?

Question 6.

Does the client have severe tremor or limb weakness which makes the changing of pad and nets more challenging?

Question 7.

Does the client require more than 3 changes of product per day? (Not including overnight?)

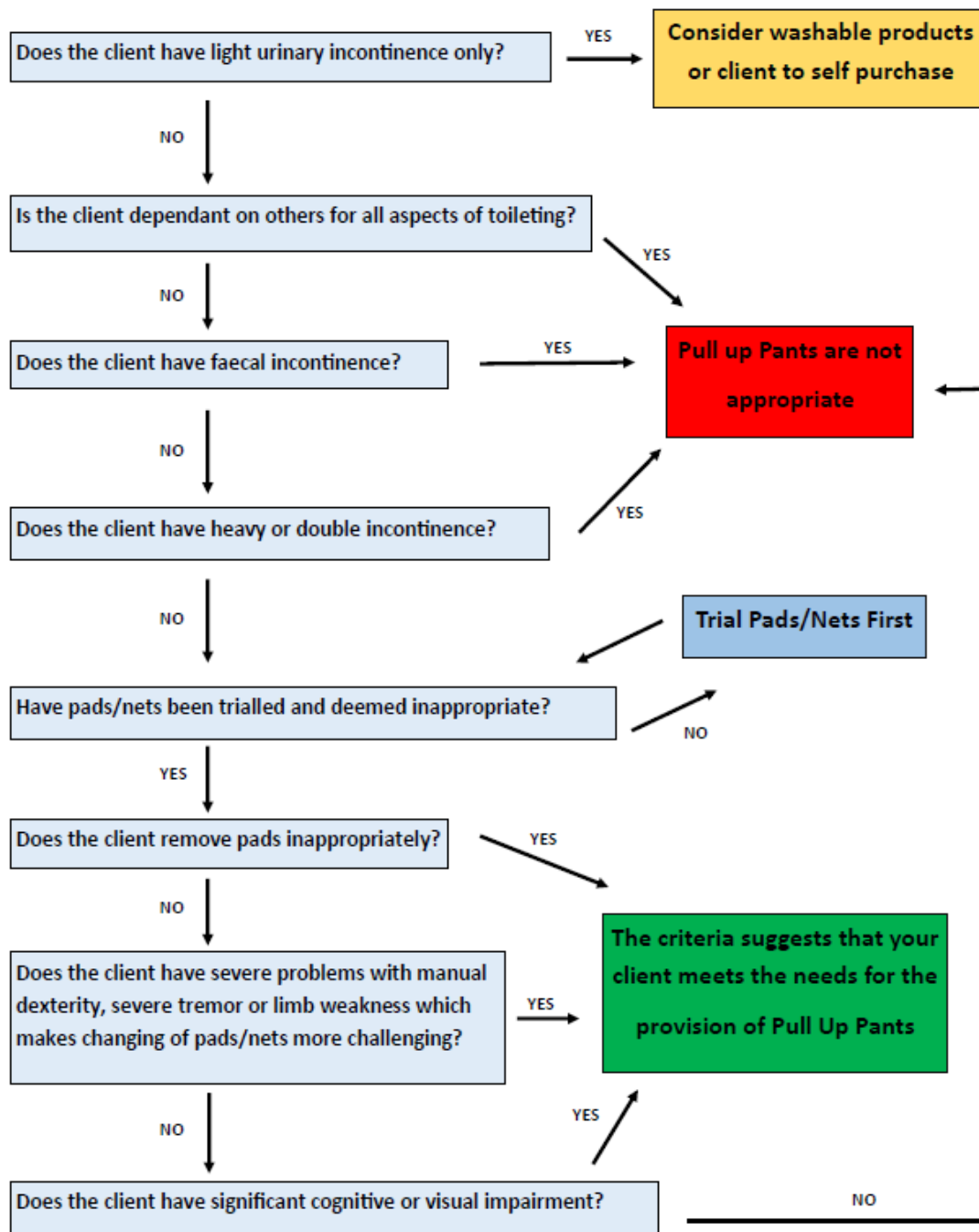
If answer to questions 1, 4, 5a & or 6 is "YES", please contact the Bladder & Bowel Health Service to request samples of pull-ups.

If the answer to question 2 is "YES" please consider use of washables.

If the answer to question 3, 5a or 7 is "YES", the provision of pull-ups is not appropriate.

Please be aware that patients require to bend down and remove clothing to change disposable pants which may contribute to a fall.

Criteria for the Provision of Pull up Pants



References

All Wales Continence Forum (2014) *All Wales Continence Bundle*.

Bladder and Bowel UK (2021) Guidance for provision of continence containment products to children and young people: a consensus document. (in current draft version)

<https://www.bladderandbowel.co.uk/wp-content/uploads/2021/12/final-Guidance-Paed-product-provision-doc.pdf>

National Institute for Health and Care Excellence (2007) *Faecal Incontinence in adults: management*. <https://www.nice.org.uk/guidance/cg49>

National Institute for Health and Care Excellence (2008) *Prostate cancer: diagnosis and management*. <https://www.nice.org.uk/guidance/cg175>

National Institute for Health and Care Excellence (2010) *Lower urinary symptoms in men: management*. <https://www.nice.org.uk/guidance/cg97>

National Institute for Health and Care Excellence (2012) *Urinary incontinence in neurological disease: assessment and management*. <https://www.nice.org.uk/guidance/cg148>

National Institute for Health and Care Excellence (2013) *Urinary incontinence in women: management*. <http://www.nice.org.uk/guidance/cg171>

National Institute for Health and Care Excellence (2015) *Urinary tract infections in adults*. <https://www.nice.org.uk/guidance/qs90>

Public Health Wales (2014) *Prudent Healthcare*.

www.wales.nhs.uk/siteplus/documents/866/PHW%20Prudent%20Healthcare%20Booklet%20Final%20English.pdf

Yates A (2021) Clinical Skills – part two: Continence Assessment and Investigations. *Journal community nursing* 35(2)24-36

Ann Yates

Updated 2017, 2020, 2022

Review 2024